

# Power

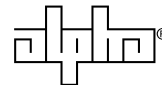
## AlphaLink

Intelligent Network Management for UPS



- Real-time UPS status monitoring
- Comprehensive UPS management and flexible configuration via Web Browser, NMS, Java Applet, Telnet, SNMP or terminal emulator
- Automatic events notification via E-mail, mobile phone (WAP), short message (SMS), SNMP Trap and PDA
- Automatically assigned IP via DHCP or BOOTP
- Standard UPS MIB and Universal SNMP HTTP Adapter (USHA)—proprietary MIB supported

Alpha's family of network management for UPS' has expanded to include the AlphaLink Series. Features include graceful shutdown to protect up to 30 servers/workstations from data loss due to power outage, scheduling shut-down/startup/reboot of UPS remote control, quick and easy installation, multiple languages supported and friendly user interface. Configuration utility simplifies the firmware upgrade process. Regularly records UPS parameters for statistical analysis and event diagnostics.



## AlphaLink

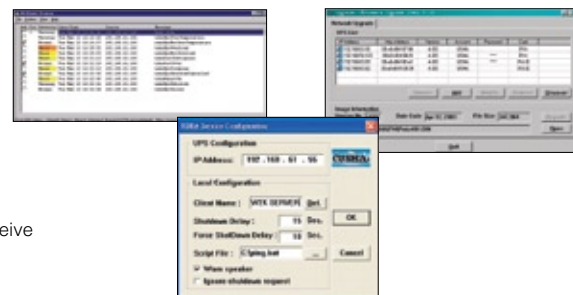
### Remote UPS Monitoring and Management

- HTTP: Supports HTTP protocol. Remote UPS monitoring and management can be easily done through Web Browsers such as Microsoft Internet Explorer and Netscape.
- SNMP: Supports SNMP protocol. Centralized monitoring and management the UPS can be accomplished by a Network Management System such as HP Open View.
- Java Applet: Java applet can be launched from within Web Browsers for real-time UPS status monitoring with graphical data.
- Telnet: Provides alternative method for configuration of the UPS, which includes automatic log out function for additional security.
- USHA View: Designed for simultaneous UPS services monitoring and management.



### Proactive UPS Event Handling

- Event Log: Automatically records and displays UPS events, warning and time stamps.
- UPS Status Notification:
1. SNMP: notifies multiple hosts, previously assigned in an SNMP trap table, of UPS status and warning messages.
  2. Java applet: notifies the Administrator of power events with a pop-up dialog box.
  3. Shutdown Daemon: notifies servers/workstations (max. 30) of power events and begins the shutdown procedure. Requires shutdown program to be installed on the servers/workstations.
- Email Notification: Daily routine information and power events can be sent through E-mail.
- Mobile Phone: With WAP support, administrator can either browse the UPS information or receive the power events short message (SMS) through mobile phone.
- PDA: Ability to browse UPS information through PDA



### Intelligent Shutdown Service

- User Unattended Shutdown: Automatically warns and shuts down UPS and connected devices \*on the user defined schedules or when there is a power event.
- User Attended Shutdown: Puts UPS to "sleep mode" or turns off/on the UPS.
- Safe Shutdown Operation: Provides countdown dialog boxes, and safely shuts down servers/workstations when there is a power event.

\* Connected devices stands for servers/workstations that have installed provided shutdown programs.



## Specifications

CPU:	16-bit micro controller
RAM:	512Kbyte x 16-bit
Flash ROM:	512Kbyte x 16-bit
LAN Interface:	Auto-sense 10/100Mbps Fast Ethernet
Serial Port:	Two asynchronous serial ports for UPS communication and console communication
SNMP MIB:	RFC1213, RFC1268, USHA MIB
Network Protocol:	TCP/IP, UDP, SNMP, Telnet, SNTP, HTTP, SMTP
LED:	Power, Status, LAN 10/100 Link
Power Input DC:	USHA Pro: 8 to 15V USHA ProE: 12V unregulated"
Power Consumption:	3W max.
Operating Environment:	Temperature: 0 to 40°C Humidity: 10 to 80% non-condensed
Miscellaneous:	Real-Time-Clock, Reset button
Language:	English, Traditional Chinese, and Simplified Chinese
Firmware Upgrading:	Network upgrade Serial upgrade (for recovery use)
System Security:	Provides IP-based filtering and password protection for system operation and administration
Approvals:	CE, FCC Class B
Warranty:	24 months

### Operating Systems Supported

Microsoft Windows 95, 98, NT, 2000, ME, XP  
Novell  
Solaris (x86 version)  
SCO UNIX 5.x  
SCO UnixWare 7.x  
Other Linux-derivative OS

### Extension Devices Supported

Environmental Monitor Device (EMD)  
(Temperature and humidity sensor)  
Motion detector  
Smoke detector  
Door open detector

For more information visit [www.alpha.com](http://www.alpha.com)

Alpha Technologies United States Bellingham, Washington Tel: 360 647 2360 Fax: 360 671 4936  
Canada Burnaby, British Columbia Tel: 604 430 1476 Fax: 604 430 8908

049-235-10-002 (3/06)

Alpha Technologies reserves the right to make changes to the products and information contained in this document without notice.  
Copyright © 2006 Alpha Technologies. All Rights Reserved. Alpha® is a registered trademark of Alpha Technologies. The Alpha Group™ is a trademark of Alpha Technologies.